

# Instruction manual



**Model IoT4H<sub>2</sub>O<sup>®</sup> -NB-II**

**Device with NB IoT data transmission**

## IoT4H<sub>2</sub>O<sup>®</sup> -NB- II

IoT4H<sub>2</sub>O<sup>®</sup> devices automatically acquire the measured values of the connected sensors and transmit these data via the NB IoT network.

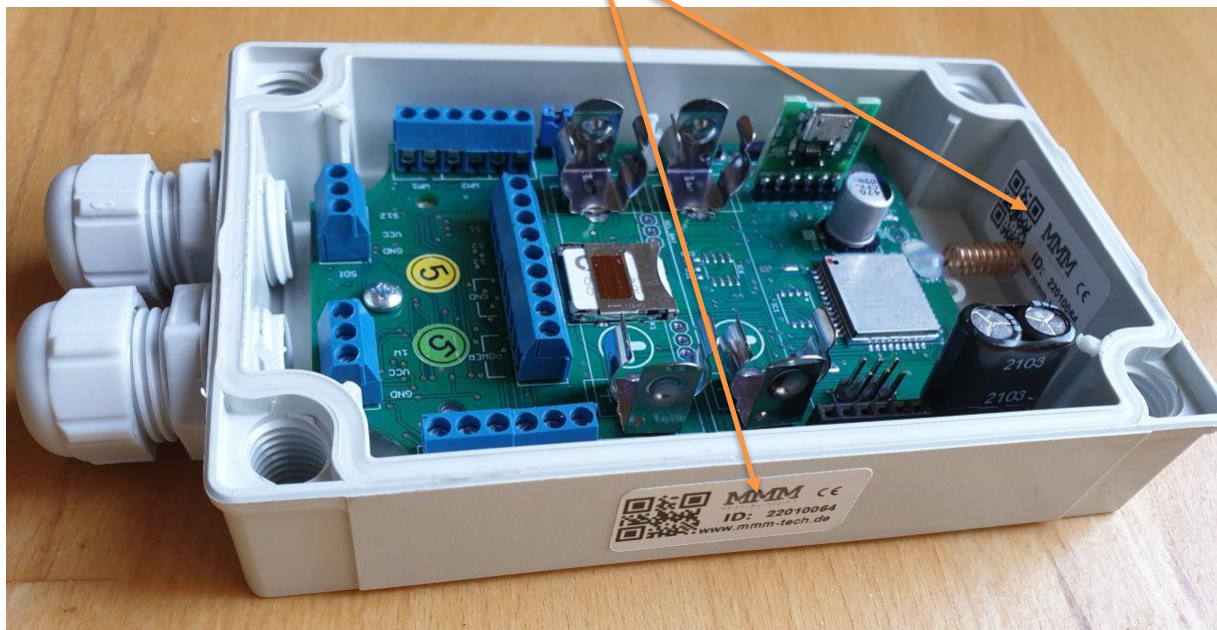
By default, the data is sent to the MMM data cloud [www.iot4water.de](http://www.iot4water.de), where it can be accessed via web app using a smartphone or computer.

Alternatively, it is possible to automatically forward the data to an IP address specified by the customer via UDP forward or HTTP callback, where it can be integrated into the customer's own website or in-house software.

The board is suitable for sensors with resistance signal as well as for sensors with voltage or volt signal. The change between the functionalities can be done by MMM tech support.

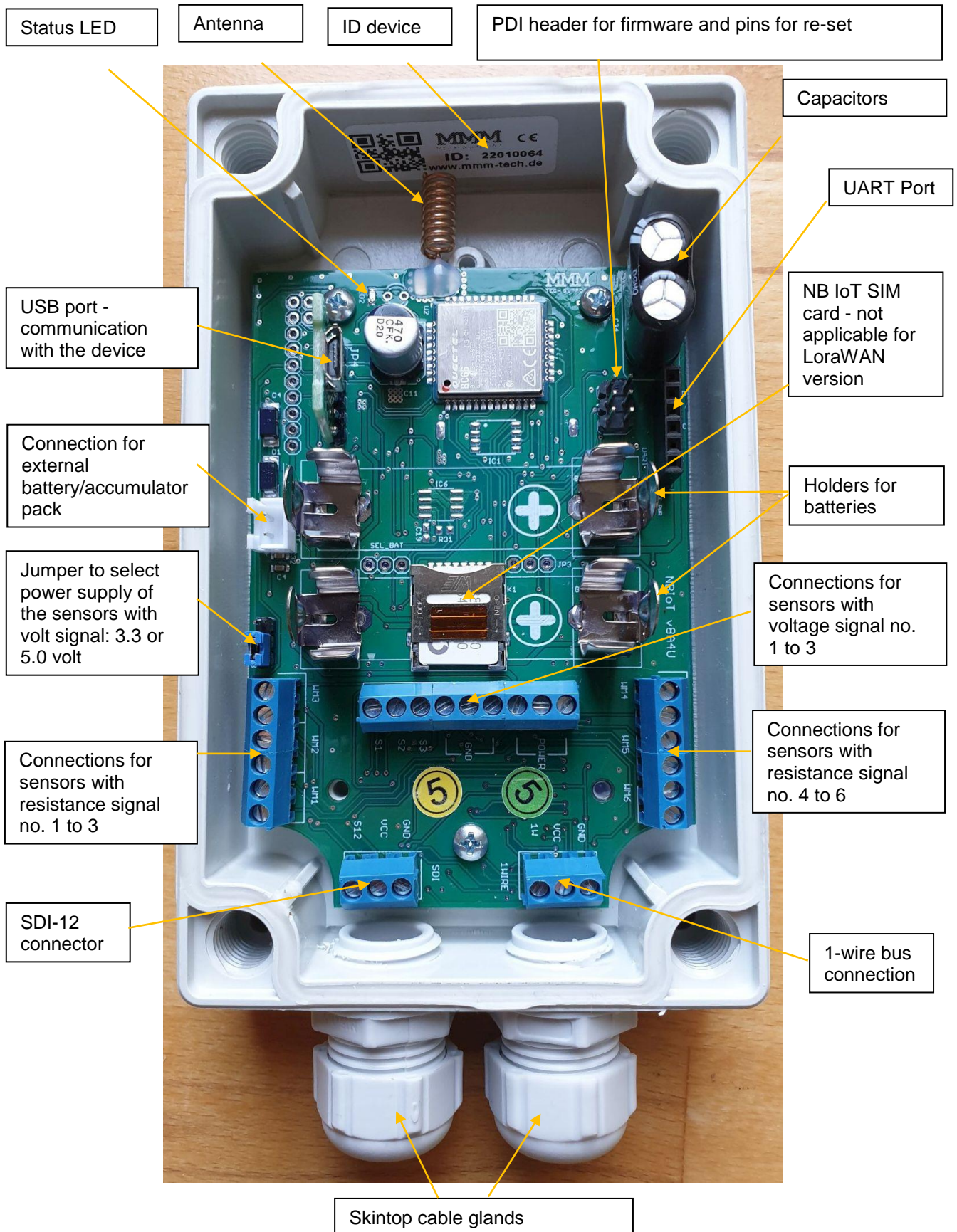
### ID of the IoT4H<sub>2</sub>O<sup>®</sup> devices

Sticker with the device ID no.



The devices are identified in the network by their 8-digit ID number. It is very important that this ID number is not lost! For this reason, the sticker with the device ID has been attached twice, once on the outside of the housing and a second time on the inside. These stickers should not be removed under any circumstances.

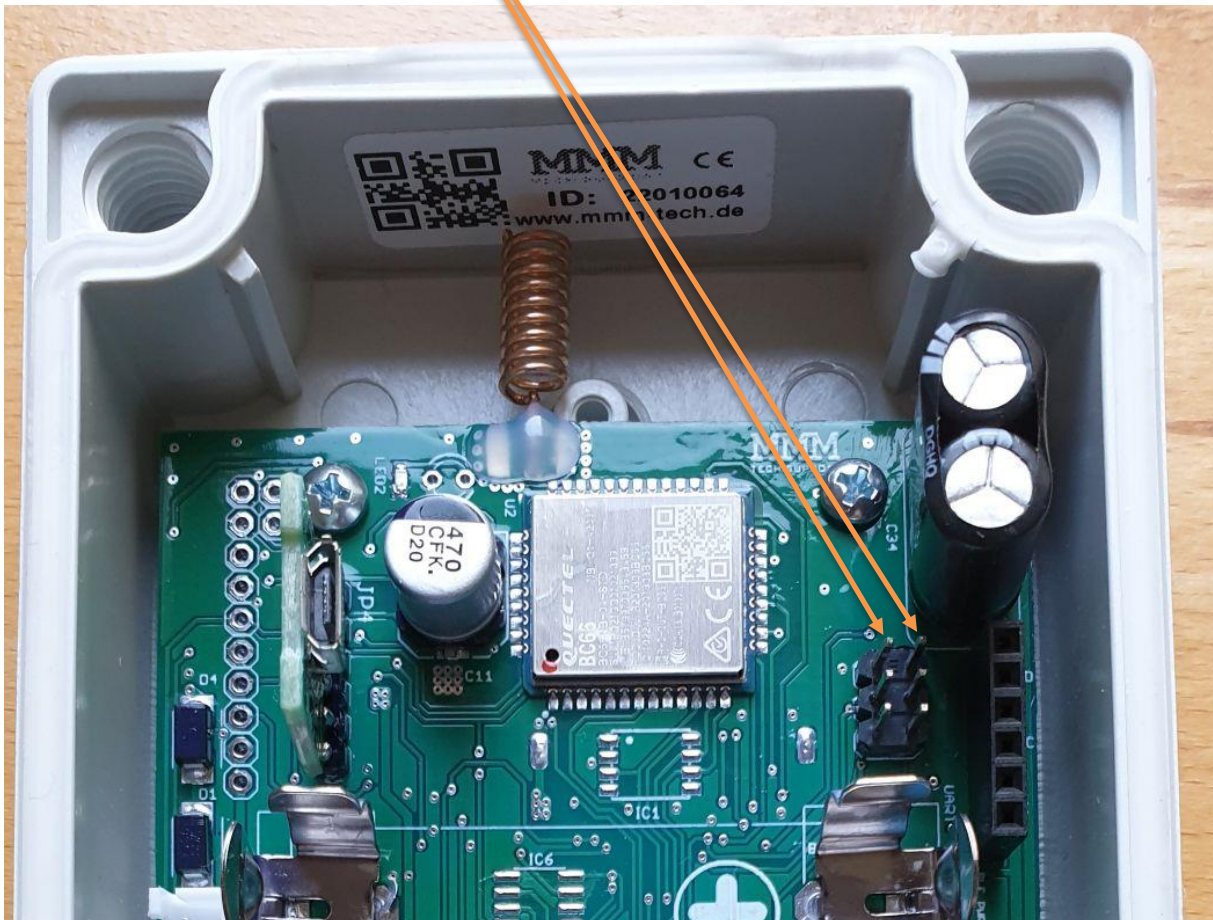
**The IoT4H<sub>2</sub>O<sup>®</sup> device:**



**Re-set the IoT4H<sub>2</sub>O<sup>®</sup> devices:**

To trigger a re-set of the device, the top two pins of the PDI header are short-circuited briefly with a small screwdriver or similar metal object when the batteries are inserted.

To re-set a device short-circuit these two pins when batteries are inserted




## Starting the IoT4H<sub>2</sub>O<sup>®</sup> devices:

To start the IoT4H<sub>2</sub>O<sup>®</sup> data transmitter, only the batteries need to be inserted. It is essential to observe the polarity!

The device can be operated with one or with two batteries.

Polarity of the battery(ies):

Connect the positive terminal of the battery to the side marked  with the large plus symbol!

Incorrectly inserted battery(ies) will cause severe damage!



It can't hurt to re-set the device about 1 minute after inserting the batteries.

Finally, a sachet of silica gel (desiccant, absorbs any condensation) should be placed in the housing, and then the lid must be screwed tightly.

When tightening the cover, always tighten the screws crosswise (similar to changing the wheel of a car) to avoid tensions during tightening, which may lead to leakage of the housing.

Always tighten screws crosswise and use a suitable screwdriver!



A company-specific designation can be written in this field with a permanent marker for easy identification of the devices.